

Leon Valley January 2023 Sales Tax Report

Background

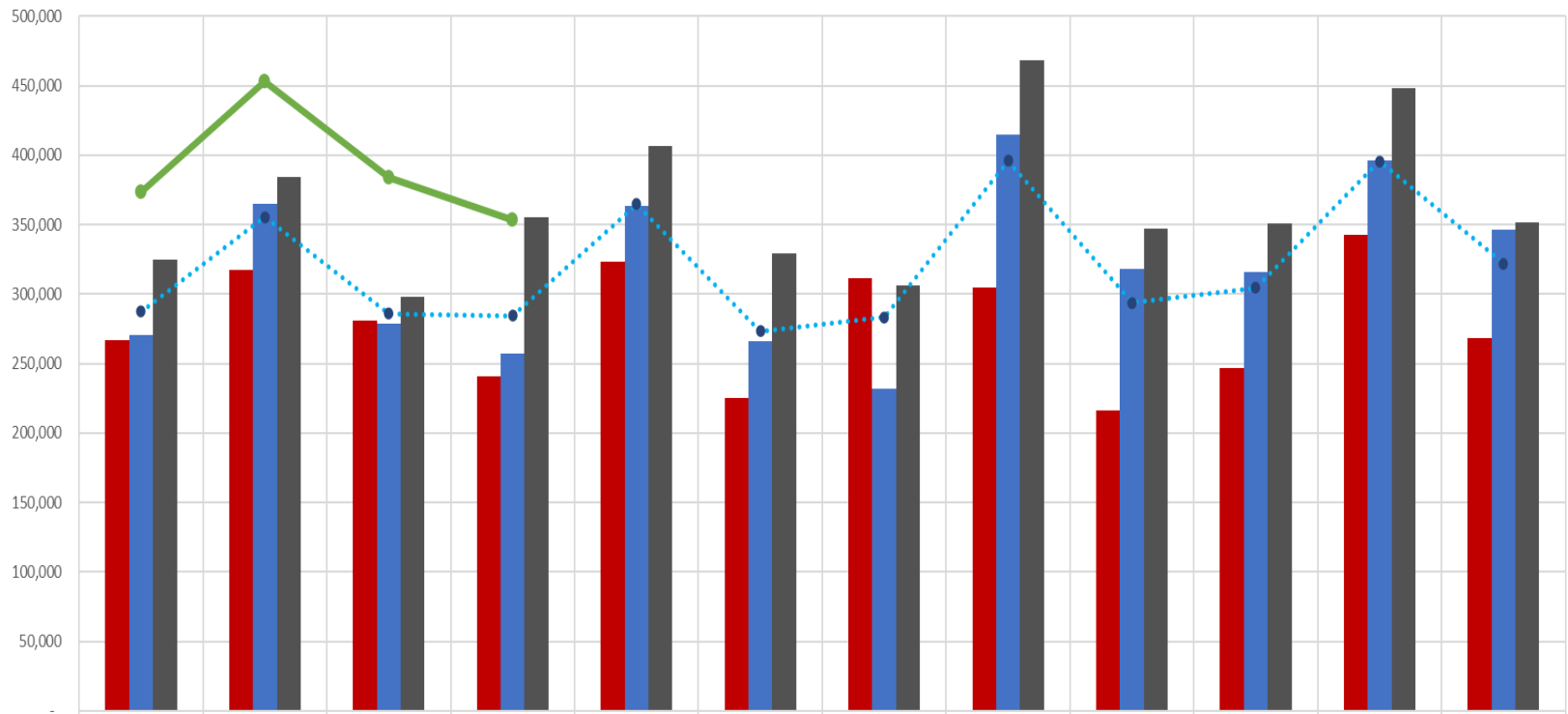
The sales tax information is provided monthly by the Texas Comptroller. The sales tax information is reported 2 months in arrears; therefore, this report reflects November actual sales tax figures.

The city collected \$355,328 for November 2022. This amount continues the trend of above average collections. However, this amount is \$1,853 or 0.52% lower compared to the same month last year. The collection for this month is also higher than the 3-year average of \$284,392.

	FY 23 Actuals	FY 22 Actuals	FY 21 Actuals	FY 20 Actuals	20-22 YEAR AVERAGE
Oct	373,753	324,722	270,370	267,005	287,366
Nov	453,005	384,247	364,694	317,139	355,360
Dec	383,875	298,129	278,923	280,913	285,988
Jan	353,328	355,181	257,417	240,578	284,392
Feb		406,894	363,397	323,643	364,645
Mar		329,009	266,104	225,092	273,402
Apr		306,435	231,728	311,336	283,166
May		468,537	414,388	304,385	395,770
Jun		347,265	317,991	216,148	293,801
Jul		350,937	315,754	246,914	304,535
Aug		448,002	396,131	342,355	395,496
Sep		351,492	346,136	268,634	322,087
Grand Total	1,563,961	4,370,851	3,823,032	\$ 3,344,143	\$3,846,009



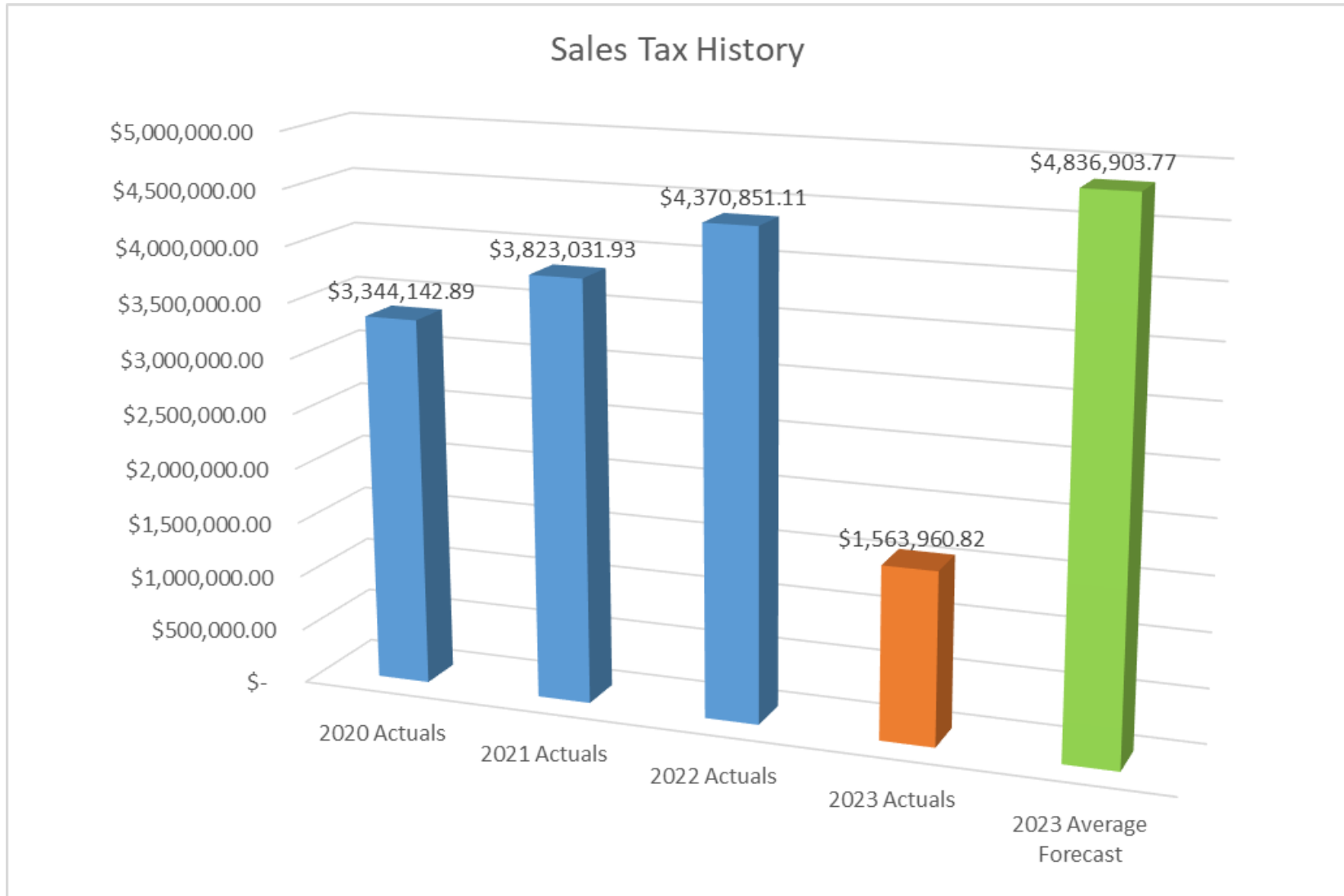
Sales Tax History



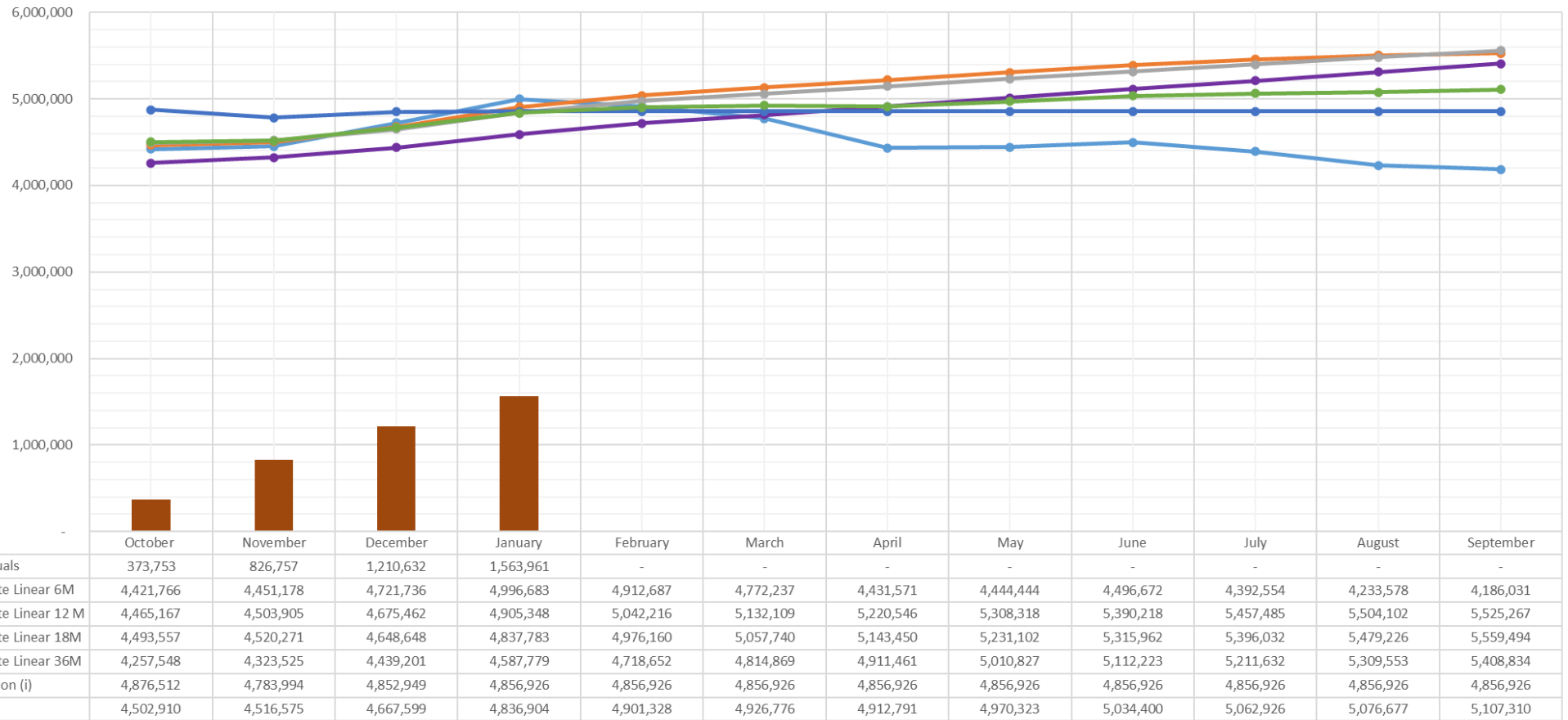
	Oct	Nov	Dec	Jan	Feb	Mar	Apr	May	Jun	Jul	Aug	Sep
FY 20 Actuals	267,005	317,139	280,913	240,578	323,643	225,092	311,336	304,385	216,148	246,914	342,355	268,634
FY 21 Actuals	270,370	364,694	278,923	257,417	363,397	266,104	231,728	414,388	317,991	315,754	396,131	346,136
FY 22 Actuals	324,722	384,247	298,129	355,181	406,894	329,009	306,435	468,537	347,265	350,937	448,002	351,492
20-22 YEAR AVERAGE	287,366	355,360	285,988	284,392	364,645	273,402	283,166	395,770	293,801	304,535	395,496	322,087
FY 23 Actuals	373,753	453,005	383,875	353,328								



As a result of the higher-than-average sales tax collections, the forecast model is showing a significantly higher amount compared to previous years. As more data points are received the projection for the year will tighten within a reasonable range.



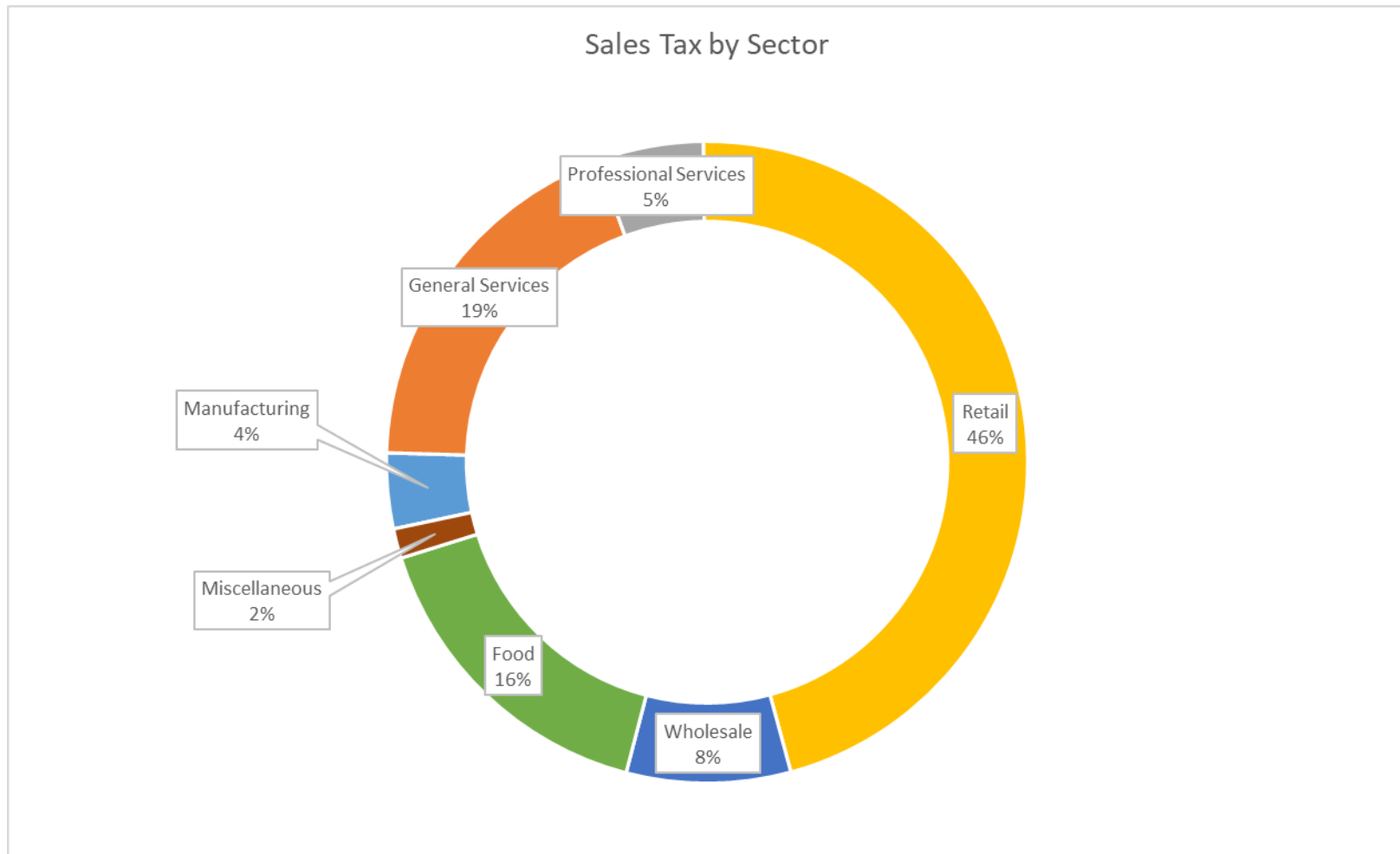
Sales Tax Forecast



■ YTD Actuals
 ● Aggregate Linear 6M
 ● Aggregate Linear 12 M
 ● Aggregate Linear 18M
 ● Aggregate Linear 36M
 ● Correlation (i)
 ● Average



The City's core sectors of retail, general services, and food represent about 80% of collections in any given month. The graph shows an average distribution for the City of Leon Valley. Monthly, staff reviews the confidential report from the state to ensure there are no major variances in the City's core sales tax sectors and taxpayers.



Leon Valley compared to other local suburban cities in the metro area.

City	Net Payment This Period	Comparable Payment Prior Year	% Change
Schertz	\$ 1,434,149	\$ 1,390,288	3%
Live Oak	\$ 1,005,723	\$ 963,042	4%
Selma	\$ 785,909	\$ 734,149	7%
Helotes	\$ 699,069	\$ 594,867	18%
Windcrest	\$ 650,208	\$ 686,523	-5%
Universal City	\$ 563,742	\$ 536,924	5%
Cibolo	\$ 544,169	\$ 457,376	19%
Converse	\$ 489,518	\$ 431,285	14%
Leon Valley	\$ 353,328	\$ 355,181	-1%
Alamo Heights	\$ 253,508	\$ 227,744	11%
Castle Hills	\$ 150,218	\$ 139,883	7%
Shavano Park	\$ 69,636	\$ 63,073	10%
Kirby	\$ 60,912	\$ 42,885	42%

